

MENDLESHAM NEWSLETTER



Issue 448

March 2021

Online Only

CLASSIFIED ADS

To Advertise here email
Keith on
shelton@live.co.uk

To Advertise here email
Keith on
shelton@live.co.uk

A.R. PLASTERING
Excellent Service Guaranteed
All areas of Plastering
undertaken
Free quote 01449 720274
Mobile 07736667447

Your Local Handyman
Minor repairs around the home
Including taps, immersion heaters
Flat pack assembly
Shed & fence painting
MANY more services provided
Tony 07771 800072
01449 781993
gooderhamt@aol.com

CHIMNEY SWEEP
Vacuum and Brush,
Andrew Brundell
01449 766614 or
07776 215940

To Advertise here email
Keith on
shelton@live.co.uk

Hand in Hand
Providing Professional Care

- Stroke support • Cancer care
- Stoma care • Personal care
- Dementia care • Respite care
- General housekeeping
- Company for times when you are just feeling lonely

'Person centred care, tailoring to your every need is what I deliver.'

Feel free to contact me for a free consultation'

Hayley Page
MOB: 07551419310
hayleypage253@gmail.com

Are you on Facebook?

If so have a look for
'Spotted in Mendlesham'
&
'Mendlesham Green Residents'
pages to keep
up to date with what's going
on in the villages.

**Email reports, articles,
photos and adverts to:
gemma.green1202@gmail.com**

Editor: Gemma Green
07733 333659
Advertising: Keith Shelton
01449 768744
shelton@live.co.uk

Paper Copies of Articles to:

Jean Abbott, 11 Mayfield Way,
Mendlesham (01449 766895)
Pat Winslett 19 Glebe Way,
Mendlesham (01449 767803)

Deadline for April Issue

6th March 2021

We produce 12 issues per year
which are delivered to every
household in the location of
Mendlesham.

Dates for your diary

Mar		Page
2nd	Camera Club Zoom Meeting	4
3rd	WI Virtual Knit, Stitch & Yarn	13
6th	Newsletter Deadline	1
10th	Parish Council Google Meeting	2
16th	WI Virtual Meeting	13

Front Cover

Meg Clarke

Don't forget to keep up to speed with the URC and Parish Church from page 39 onwards.

Editorial

Welcome to the March virtual issue. We have conquered the Winter weather withstanding flooding, high winds and snow storms and for some, total lockdown for twelve months. The future has got to be better and already Snowdrops, Helleborus and Crocus have fought their way up to sunlight to give us garden colour. Dare we hope that lockdown will lift to some degree soon?

*Best Wishes
Gemma*

FROM THE PARISH COUNCIL



Parish Clerk: Sharon Jones, Honeysuckle, Hockey Hill,
Wetheringsett, Suffolk IP14 5PL

Tel 01449 766139

Email: parishclerk@mendleshampc.org

Web site: <https://mendlesham.suffolk.cloud>

Your Councillors are:

- Paul Allen tel 766543
- Andy Davey tel 01449 768862 (Chairperson)
- Mike Exley tel 766246 (Emergency Planning Co ordinator for Mendlesham)
- Denise Foster tel 768978
- Norman Foster tel 768978
- Brian Gardiner tel 766648
- Sandie Judd tel 0333 006 2706
- David Nunn (Emergency Planning Co ordinator for Mendlesham Green, Tan Office and outlying properties) tel 767158
- Helen Orton tel 767741
- Liz Ward tel 766562
- Sabrina Webb

Meetings:

We have provisionally agreed dates and times for 2021 for our regular, planned Ordinary meetings. However, at this stage we do not know when we will be able to meet physically rather than virtually. Further details can be found on the Mendlesham website.

At present all meetings, those planned monthly and any additional meetings required due to unanticipated parish council work load, have to be held virtually with agendas published on the Mendlesham website and also circulated via E News. If you have not signed up for E News, you can do so on the home page of the website.

Wednesday 10th March 2021 Ordinary PC meeting virtual meeting via Google Meet 7pm

Wednesday 14th April 2021 Ordinary PC meeting virtual meeting via Google Meet 7pm

In case of need:

Please remember the "**Home, but not alone**" support, is still available
Tel 0800 876 6926 . Details also found on the Mendlesham website.

Take care and stay safe.

Mendlesham Neighbourhood Development Plan



Informal consultation with our residents

What is happening?

The current Neighbourhood Development Plan (adopted in March 2017) is being updated. In particular areas for future development have been identified and some of the development policies have been updated.

A detailed draft is available to all residents for their consideration and response.

When?

The consultation period will start on 15 February 2021 and end on 12 April 2021.

Where do I find information about the consultation?

The draft Neighbourhood Development Plan is a single document that has 36 Supporting Documents (that evidence the work done and conclusions reached).

We do not plan to produce printed copies of all the documentation because of cost and possible contamination issues but limited prints of specific documents or parts of documents may be produced if necessary.

All of these documents are available on the Parish Council's web site using the following link.

<https://mendlesham.suffolk.cloud/mendlesham-parish-council/neighbourhood-plan/february-2021/>

Who should I contact?

All responses to the draft Neighbourhood Development Plan should be sent to the Parish Clerk (contact details below)

If you have any queries about the consultation and need to speak to someone then in the first instance please e-Mail or phone the Parish Clerk who will get someone to call back and discuss the issue with you.

e-Mail: parishclerk@mendleshampc.org

post: Parish Clerk, Honeysuckle, Hockey Hill, Wetheringsett, IP14 5PL

telephone: 01449 766139

What next?

Once the consultation has ended and all issues dealt with the draft Neighbourhood Development Plan will be submitted to Mid Suffolk District Council (MSDC) for its consideration. Once approval is received from MSDC the draft Neighbourhood Development Plan can be put forward for a local referendum where all residents have the opportunity to vote for, or against, its adoption.



MENDLESHAM CAMERA CLUB



The next Zoom meeting will be on Tuesday
2nd March at 1900 hours and last about an
hour. The photo theme for this month is 'abstract - numbers or
alphabet' - we submit photos on this subject to a Dropbox, these will
be displayed and discussed. In the second part of the meeting a
member of the group will talk about a photography related technical
subject aimed to help us all.

The club is a small group of mixed photography ability and new
members are always welcome.

For details please log onto the
website:<http://www.mendleshamcameraclub.co.uk/> or contact
mike@favager.co.uk



Film Nights



We are so sorry that at this time we are unable to run film nights –
but watch this space!

We'll be back

**Unfortunately the Mobile Library will not be able to run
at the moment.**

Watch this space for updates though.

Are you fed-up with doing the same old walks?

Walking in Suffolk www.walkinginengland.co.uk/suffolk is the website for you!

With hundreds of walks to download and print, free, it also has books of walks, contact details for all the walking groups in the county and much more. Whether you want to walk on your own or with a group all the information is there in one place.

John said ‘There is so much walking information on the web but it is difficult to find. Walking in Suffolk (part of the Walking in England suite of websites (www.walkinginengland.co.uk) – one for each county in England) has brought it together in one place so whether you are walking from home, or away on holiday, you will be able to find a walk suitable for you’.

With walks from half a mile to twelve miles plus long, and a note of suitability for pushchairs and wheelchairs, everyone can find a walk to enjoy.

So home or away, check out the websites and get walking!

John Harris

www.walkinginengland.co.uk

3rd Monday Book Club



We are a group of villagers, that have become friends.

**We meet on the 3rd Monday of each month
at 7-8pm in person when we can – or on line**

We talk about the book that was chosen for us all to read at the previous meeting. We're relaxed and informal (and we have biscuits). If you've ever wondered about joining a book club, why not join us?

Information: 01449 766498, doug.l.williams@outlook.com

Previously: 'The Trouble with Goats and Sheep' (*Suburban*); 'Our House' (*Howdunnit*); See Jane Run (*Psychological thriller*); Conversations with Friends; The Hopes and Dreams of Lucy Baker (*Romantic Fiction*), Milkman.(tbd), The Western Wind (*historical whodunnit*); We have always lived in the castle (*mystery Thriller*); The Mars Room (*Prison novel*); Free read (summer); All That Man Is (*literary fiction*), The Wall (*Science fiction*); Mrs Palfrey at The Claremont (novel); The Catcher in the Rye (*coming of age novel*)



The term has continued with the majority of our pupils remote learning. This has involved a mixture of online sessions and paper packs that we create for them. We have remained open for a number of critical worker children and vulnerable children.

We would like to thank the community for their support of our school during this difficult time. Donations to our PTA (FOMSA) from local organisations, including the Community Council and individuals means that we have been able to purchase a large number of headphones to support pupils' online learning and more books to ensure that we have enough for each child to take home, including for learning beginning in March. We will also be updating books within school for when the children come back, this will include new sets of atlases and more non-fiction books.

Children starting school in September 2021?

Don't worry, it's not too late to apply, even though the first deadline has passed, you can still apply using a CAF1, follow the link [editable version of the application form \(CAF1\)](#) (Word, 68KB) and email to admissions@suffolk.gov.uk, or if you are unable to access this version apply for a place by downloading and completing [an application form \(CAF1\)](#) (PDF, 204KB), or ask at the school for help.

Tessa Sait
ExecutiveHeadteacher

Old Station Road, Mendlesham, Stowmarket, Suffolk, IP14 5RT
admin@mendleshamschool.org.uk

Parish Council:

Mendlesham Parish Council Precept 2021/22

Mendlesham Parish Council has agreed the Parish Council element of the Precept for the year commencing 1.4.21 will remain unchanged at £40,000.

This is the Parish Council element that will be part of the annual Council Tax bill issued by Mid Suffolk District Council (MSDC), including funds due to MSDC, Suffolk County Council (SCC), Suffolk Police and Mendlesham Parish Council.

This decision has been extremely difficult this year, not only to try to protect residents from the current economic emergency but to balance the need to continue to provide local services and assets. There is also an additional need from this year, to budget for professional grasscutting and a renewal reserve for the new MUGA and WSA at Mendlesham Playingfields. We have had to drastically reduce our budget expenditure lines, including provision of grants.

Whilst locally, the Precept amount received by the Parish Council will be unchanged, unfortunately this does not mean that Mendlesham Parish eligible households will pay the same as last year.

At the time of writing, it appears MSDC, SCC and the Police will increase their part of the Precept. We also understand that notwithstanding new dwellings being built in Mendlesham in the past year, the tax base or those eligible to contribute towards the £40,000 is significantly reducing, perhaps due to the current economic situation and changing individual circumstances, including jobs being lost?

So for example, if you live in a Band D property, we understand your Council bill will show an amount of £71.23, an increase of 1.63% on 2020/21.

Unfortunately we were unable to make the budget for next year balance and continue to provide the service and assets we do as a Parish Council if we reduced the £40,000.

So tough times ahead, at a time when more local residents and organisations may need support, but hopefully a short term situation and we will have to find solutions as required.

Mendlesham Walks

We have had some beautiful winter days, but oh, my, we have had some very wet and cold ones to say nothing about wind and frost! However, I am so pleased to see more and more people out walking. It is a simple form of exercise with so many benefits – fresh air, great things to see and a booster to both mental and physical wellbeing. Sadly it has not been possible to run regular group walks due to the need for us to minimise the spread of this dreadful virus.

Remember though, that within our daily exercise there are many walks we can choose from – take a look at a local map of Mendlesham Parish or visit the webpage below for walks that you can follow.

Whenever you can, despite the mud, please stick to the public footpaths. This means you avoid trespassing or potentially damaging the farmland. Keep you dogs under control to avoid chasing wild life or farm animals. Our farmers have not stopped work during the pandemic and we need to respect their working environment. Take any rubbish home, close gates and report any missing footpaths signs or seek clarity if you are unsure of a route. Members of the Walking Group are always happy to help.

By the time you are reading this there will be many signs of the spring that is just around the corner. Enjoy.



Contact Judith on 07770 746619 or email
mendleshamwalks@gmail.com

To added to the Email Circulation List or for more information

See Mendlesham Parish Website for further information about local
walks

<http://mendlesham.suffolk.cloud/clubs-and-organisations>
Select 'Walking Group' or just Google 'Mendlesham Walks'

Parish Council:

Future of Mendlesham Community Centre:

Further to the last newsletter, meetings are continuing and a decision will need to be made at a meeting of Mendlesham Community Centre Charity planned for 24th February 2021.

We are fully aware that all information regarding this matter, with the exception of use of our Parish Noticeboards, has to be via electronic communication, ie this newsletter currently only published on the Mendlesham web site as it cannot be physically delivered and via E News.

This is by no means ideal, but there is nothing any of us can do about it. Please would all residents try to make those who may not be able to access information electronically aware, keeping yourselves, your family, friends and neighbours informed.

Please don't forget, Parish Councillors and the Clerk can still be contacted by telephone and letters can still be posted to the Parish Council, care of the Clerk to Mendlesham Parish Council, Honeysuckle, Hockey Hill, Wetheringsett IP14 5PL

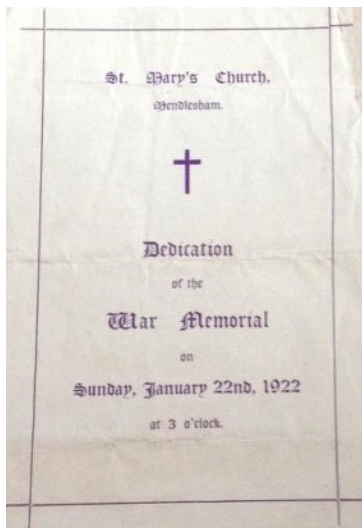
Parish Council:

Tenders re land at Mendlesham Green:

We are commencing a tender process for a 12 month licence for two plots of Parish Council land at Mendlesham Green closing date and receipt of bids in a suitably marked sealed envelope to be received by the Clerk by **Friday 5th March 2021**. Details will be circulated via E News and placed on the Parish Notice Boards. However, please do not hesitate to contact the Parish Clerk for further information as required.

DISCLAIMER

All adverts are placed in good faith and the publishers cannot undertake responsibility for work carried out. Please note that the opinions expressed in articles are not necessarily those of the Mendlesham Newsletter committee or the Community Council. We cannot be held responsible for the accuracy of material submitted for publication, however we reserve the right to include, edit or amend as we think appropriate. Mendlesham Newsletter is produced in good faith but errors and omissions may occur during the process of production. Please let us know if this is the case so that these errors may be corrected in future editions.



The Indenture of the War Memorial committee which relates to the WWI Plaque was signed by the members of the committee.



Reverend Manwaring White, the Vicar of Mendlesham

Miles Cutting, the owner (grocer and draper) of the Cuttings Stores in Mendlesham. Miles and his wife Susannah lost their eldest son, Henry Miles Cutting and their nephew, Alfred Gooderham, in WW1.

Charles Cutting, a nephew of Miles Cutting who lost Henry Miles Cutting and Alfred Gooderham his cousins.

Althea Katie Scott, the youngest daughter of Miles and Susannah Cutting, who lost her brother and a cousin.

Victor Pizzy, the village butcher. He married Alice May Juby, daughter of Mary Ann Juby.

Mary Ann Juby, the mother-in-law of Victor Pizzy.

Arthur Mayfield, Mendlesham School Head Teacher, after whom Mayfield Way was named.

John Hunt Teager, a Congregational Minister living at Elms Farm, Mendlesham.

Agnes Tye, the sister-in-law of Anna Tye.

Anna Tye, lost three cousins Leopold Tye, Henry Mile Cutting and Alfred Gooderham.

More in next months newsletter....

Friends of Debenham Library

See www.suffolklibraries.co.uk/coronavirus for the latest details

Libraries are now open again for “Select and Collect” service and reservations so that people can request and pick up items from their library.

Please note that the library will close at 6pm on Wednesdays until further notice, during the winter.

There will be no rush to bring items back as loan periods will again be extended and charges suspended. Browsing inside libraries and the use of computers will remain unavailable for the time being. The mobile library services and home library service will also remain suspended for now.

As always our plans are dependent on any changes in infection rates or government guidance.

At Debenham the garden outside the library has been receiving attention, and we have planted primulas in the letters SRH cut in the grass beside the drive. We hope they will still be there when you visit, despite the snow and cold!

For free audiobooks, ebooks, films, newspapers/magazines and other online services, use your library card at www.suffolklibraries.co.uk. There are also podcasts and videos available on the YouTube channel www.youtube.com/user/SuffolkLibraries.

School corner, Debenham IP14 6PL (next to the Primary School).

Opening hours:

Tuesday: 0930 am – 1300 pm	Wednesday: 1500 – 1800 pm
Saturday: 0900 am – 1300 pm	Sunday: 1200 – 1600 pm

Tel: **01728 861940**

www.suffolklibraries.co.uk/visit/locations-and-times/debenham-library

Facebook: @DebenhamLibraryFriends

Email: debenham.library@suffolklibraries.co.uk

TOTE RESULTS

Mendlesham Lottery January 2021			
9th January		23rd January	
Noel Fletcher	£35.00	Mark Kendal	£35.00
Richard Knock	£25.00	Peter Cole	£25.00
Helen Orton	£15.00	Norman Foster	£15.00
Jackie Williams	£10.00	Laura Sommer	£10.00



MENDLESHAM WI

We have just logged into our first zoom meeting and it was a great success. We are very grateful to Giles Godart-Brown on behalf of the Computer Club for enabling this for us and also to Ruth for the introduction. 24 members joined in and this time we caught up on what we have (or not) done during lockdown. Family, jigsaws, walks, baking and pets featured largely.

Following from this success we plan to have a virtual knit, stitch and yarn on Wednesday 3rd March at 10.30am and the next meeting will be on Tuesday 16th March at 7.30pm when it is planned to have a quiz and a virtual speaker – something light hearted.

If you are a member or a prospective member who would like to be included please contact president Anita (766902) for the link into the meeting. You will be welcome – sorry you have to provide your own tea and cake!

MENDLESHAM DIRECTORY

1 st Mendlesham Guides	Emma Munday	766096
3 rd Monday Book Club	Doug Williams	766498
Annual Parish Party	Rachel Roshier	07881 816622
Ancient Order of Foresters	Beatrix Wrinch	07885 909869
Bowls Club	Peter Coleby	766985
Brownies	Brenda Stannard	766308
Carpet Bowls	Kenny Ager	766146
Com. Centre/Small Hall Bookings	Sharon Jones	766139
Community Council	Carolyn Triscott	766563
Community First Responders	Mike Favager	766007
Computer Club/Saturday Cafe	John & Brenda Player	768101
District Councillor	Andrew Stringer	01449 780339
Film Nights	Judith Howard-Rees	07770 746619
F.O.M.S.A	C.P School	766224
Friends of Mendlesham Health Centre	Phil Tucker	01379 678400
History Group	Sue Michell	766434
Mendlesham Parish Party Committee	Rachel Roshier	07881 816622
Mendlesham Camera Club	Mike Favager	766007
Beavers, Cubs and Scouts	Martyn Bryant	01379 788998
Mendlesham Explorer Unit	Jonathan Freeman	01449 766676
Mendlesham FC	Tim Mack Angela Lockwood	07909 810681 07845 471154
Mendlesham Toddler Group	Selina Cannings	07925 198581
Mendlesham Walking Group	Judith Howard-Rees	07770 746619
Mendlesham Writers Group	Noel Fletcher	766968
Old School Room Bookings	Daphne Lambert	766320
Over 60's	Tina Pipe	766339
Parish Council & Playing Field	Sharon Jones	766139
Rainbows	Becky Froude	01473 747772
School Governors	Sharon Jones	766139
St Mary's Parish Church	Father Philip Gray	766359
St Mary's Church Council	Hazel Spalding	768616
Trustees of Charities	Mike Favager	766007
United Reformed Church	Margaret Jackson	766321
Village Recorder for Mendlesham	Geoff Clarke	766447
Woman's Institute	Anita Scruby	766902

Mendlesham Baby and Toddler Group

Meets in the large hall of the Community Centre.

Tuesday and Thursday Mornings

9:15 - 11:30



Come and join us for a drink, snack,
activities and a large space to play in.

Contact Selina Cannings on 07925198581

MendleshamBabyGroup@gmail.com

Facebook; Mendlesham baby toddler group
for further information.

Pardon me sir, if I may ask
Are you hiding a smile behind your mask?
I wonder if I even know who you are
Although a little familiar

Could we be friends who sometimes greet
each other when we are crossing the street?
Trying to comply with our government's
insistence
That we maintain our two meter distance

Do I recognise your manly bearing
As well as the clothes that you are wearing?
I'm sure I've seen that jacket before.
YES I know you...you live next door!!!

As we strive to control this damaging virus
We're grateful to all who seek to inspire us.
To all fellow villagers of Mendlesham
Thanks, keep it up, the end will soon come

Jack Kelly



Wiggles & Snuggles Pet Care



care for all animals big or small

Pet Sitting Dog Walking
Small Animal Care Large Animal Care
Small Holdings

Caring for your pets as if they were my pets

DBS Certificate Fully Insured

Contact Claire 01449 767861 / 07415953659

wigglesandsnuggles@gmail.com



For a professional caring service

Local Stowe Veterinary Group Surgeries at:

- Bury St. Edmunds • Elmswell
- Needham Market • Ipswich
- Stowmarket



54 Bury Road, Stowmarket, Suffolk IP14 1JF

Tel: 01449 613 130 | www.stovevets.co.uk



Acorn Kennels

Jodi Palmer
Acorns
Wash Lane
Mendlesham
Stowmarket
Suffolk
IP14 5TD

Opening Hours
Mon - Sat 9.00am to 12.00pm
Visitors welcome other times
by Appointment.

Fully Licensed and Insured

Tel:
01449 767160
07754 851789

For friendly
personal care



Amanda
Polley

Swimming Lessons

Private one-to-one swimming lessons nr Wetheringsett

30 min sessions on weekday evenings and weekends available

All ages (including babies from birth) and abilities

Experienced, STA Qualified, CRB checked and Insured

Call **07910 376 906** or Email theswimteacher@yahoo.com for details

HAYWARDS

— SOLICITORS —

- Conveyancing & Energy Performance Certificates
- Divorce, Separation, Childcare, Adoption and all other Family/Matrimonial problems including Collaborative Law
 - Wills, Probate and Inheritance
 - Elderly Client Care

**CAR PARK AVAILABLE FOR USE BY CLIENTS AT
OUR OFFICES AT**

7- 9 TAVERN STREET, STOWMARKET

Telephone: (01449) 613631

email: enquiries@haywards-solicitors.co.uk www.haywards-solicitors.co.uk

ESTABLISHED 1976

TAYLOR'S

FLOORING &
FURNITURE

THE AREAS LARGEST STOCKIST OF
CARPET, VINYL AND BEDS

10% DISCOUNT

ON ALL CARPET, VINYL & BEDS
ON PRODUCTION OF THIS ADVERT

ADVERT MUST BE PRESENTED AT TIME OF ORDER TO RECEIVE DISCOUNT
(EXCLUDING REMNANTS & SPECIAL OFFERS)

FREE MEASURING AND ESTIMATING SERVICE AVAILABLE

UNIT 15, CHARLES INDUSTRIAL ESTATE, STOWUPLAND ROAD,
STOWMARKET, IP14 5AH. 01449 615861

4 CLEANRIGHT

CARPET, RUG & UPHOLSTERY
CLEANING SPECIALISTS

FULLY INSURED - WE MOVE FURNITURE
NON-FRANCHISED. RELIABLE PROMPT SERVICE

CARPETS Lounge from £20. **RUGS** From £5
UPHOLSTERY From £25

DOMESTIC – END OF TENANCY - COMMERCIAL
PLEASE CALL US FOR A FREE QUOTE

TEL 01449 711687

Free advice on all your double-glazing enquiries including:

- 'A' energy-rated UPVC windows
- Doors
- Conservatories
- Rain water goods i.e. fascias, soffits, guttering and downpipes

Removal and full replacement of the above.

All repair work undertaken e.g. sealed units, window/door handles, adjustments to windows/doors

Replace your old polycarbonate conservatory roofs with 'A' rated self-cleaning glass

**Enquiries to
Michael Brame
(Bacton)01449 781533
or mob.07931 784470**



Unisex Salon
For all Salon Services

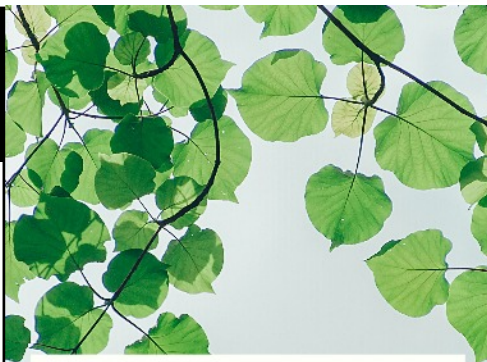
Including perms, colouring, tints, highlights, cuts, blowdrys, etc

Only the best products from GOLDWELL are used.

Also offering a waxing service at competitive prices

Phone GILLIAN
For your appointment now
on **01449 766568**
or **07795 087670**

The Brambles, Green Road,
Mendlesham Green IP14 5RF



SUFFOLK

**GARDENING
THYME**

Mowing, Planting, Pruning, Training,
Hedges, Tidying, Feeding

07736 348 545 | @suffolkgardeningthyme
suffolkgardeningthyme@gmail.com

ALL SEASONS LANDSCAPE GARDENING

Garden Landscaping • Turf Laying • Paths & Patios
Garden Maintenance • Hedge Cutting • Fencing
Specialise in Low Maintenance Gardens

Established since 1998 Fully Insured & Guaranteed

For FREE estimates and more information on our service call **Simon** on

01449 720221 / 07922 035204

email: suffolksi68@gmail.com

www.allseasonslandscapegardening.co.uk



D Palmer Vehicle Repairs Ltd

Unit 46 Red House Farm, Bacton, Stowmarket, IP14 4LE

01449 780446

We are a local family run garage you can trust.

If you need some advice or any repairs/services carried out give us a call today

Painting & Decorating

General Property Maintenance

Window Cleaning & Gutter Clearance

Carpentry and Joinery

STEVE'S HANDYMAN SERVICES

Please call me to discuss your requirements

Fully insured

Steve Mountain

2 Fairfield Cottage, Thorney Green,
Stowupland, Stowmarket, Suffolk, IP14 4AD

07764 373680



David Foster Heating

Local Heating & Plumbing Engineer

Boiler Servicing & Repairs

Boiler & Central Heating Installations

Water Softeners, Pumps, Valves & Programmers fitted

Gas Appliance Installations

Tel: 01449 781477

Mobile: 07979 505618

e-mail: davidfosterheating@gmail.com



YOUR RELIABLE LOCAL PLUMBER



Anglian Water Approved



Mark Jardine

Plumbing & Heating



- All Household Plumbing, Large or Small
- Full Bathroom Installation
- Domestic Heating, Radiators, Pumps etc.
- Water Softeners
- All Work Anglian Water Certified
- Free Estimates & Fully Insured
- 24 Hour Emergency Call Out

Tel: 01728 628291 Mob: 07854 924 801

Email: mgjardine@btinternet.com

Optimal Heating

Father & Son Team
with over 30 years experience

Specialist Heating Engineers
Oil, Natural Gas & LPG Servicing and Repairs



Tel: 01728 628687

Mobile: 07806 660399





Design - Manage - Build

All Electrical systems covered -
New installs - Rewires
Fault finding and Rectification - Process control
Electric motors and Gearboxes
Condition reporting
General building – Landscaping – Extensions
Conversions – Made to Measure Kitchens
Cart Lodges – New Builds
Full design / planning and consultancy service
Garden / Ground clearance

Call Will Baker on
07387 075632

info@owl-ebs.co.uk

www.owl-ebs.co.uk

18th Edition Part P Approved Electrical Installer

GRAHAM MOORE ELECTRICAL LTD

Blacksmith Cottage, Silver Street,
Old Newton, IP14 4HF

For all your electrical needs



For a friendly and efficient service

Call Graham on Tel: 01449 616946 Mobile: 07867 560357

FREE ESTIMATES

ALL WORK GUARANTEED

To Advertise here email Keith on
shelton@live.co.uk

Andrew Bingham

INDEPENDENT FUNERAL SERVICE

Stowmarkets Independent Family Funeral Service

24 Hour Personal Service • Private Chapel of Rest • FREE Parking



Telephone: **01449 771666**

www.andrewbingham.co.uk



The Nutshell, Milton Road South, Stowmarket, Suffolk IP14 1EZ

Golden Charter
Funeral Plans 

L. FULCHER

FUNERAL DIRECTORS & MEMORIAL CONSULTANTS

01449 613033

58, Ipswich Street, Stowmarket IP14 1AD

We'll guide and assist you through all the funeral arrangements. Call us 24 hours a day.



*Low Cost Funeral Options
available without any
compromise on service*


Dignity
CARING FUNERAL
SERVICES



GT CARPENTRY & BUILDING

EMAIL: ENQUIRIES@GTCB.CO.UK TEL: 07887 796 619

KITCHEN FITTING • ROOFING • INTERNAL WORKS • DECKING • FENCING • PANELLING



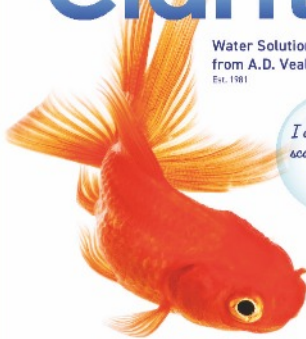
GT CARPENTRY & BUILDING



GTCARPENTRYANDBUILDING

Clarity

Water Solutions
from A.D. Veale
Est. 1981



*I don't have a
scale problem.
Do you?*

- Water Softeners
- Drinking Water Systems
- Boiling Water Taps
- Repairs and Servicing
- Free Salt Delivery

www.clarity-water.co.uk

01379 871020 info@clarity-water.co.uk

THE GABLES, EYE ROAD, BROME, EYE, SUFFOLK IP23 8AL

smile

and let me take care of your
holiday, all you have to do is enjoy

Book with confidence

Travel is my passion and
with over 29 years of travel
knowledge and experience,
you can relax knowing
you're in safe hands.



- Fully Financially Protected
- Independent expert advice
- ABTA & ATOL bonded

Sarah Green 01449 797221
sarah.green@hays-travel.co.uk
haystravel.co.uk/sarah-green



Sarah Green at Hays Travel



[sarahgreen_haystravel](https://www.instagram.com/sarahgreen_haystravel)



Hays Travel

Life Changing Hypnotherapy

Experience this effective, relaxing therapy for help with:

- Stopping smoking
- Weight loss
- Confidence issues
- Stress and anxiety
- Overcoming fears and phobias

Free initial consultation

Wendy Chalk BA (Hons), HPD, MNCH

07817 158429 or 01449 780352

www.wendychalk.co.uk

DIRTY OVEN ???

DOMESTIC OVEN CLEANING
By the UK's leading
oven cleaning company

OVENCEAN

OVER 500,000 cleans

NON caustic, fresh solution every time.
Hobs, Extractors and Microwaves
Aga's and Ranges

PHONE JOHN DYER on
01359 259818 or 07835 256967
www.ovenclean.com

TIME FOR YOU™

DOMESTIC CLEANING

Are you tired of cleaning?



We have the
right cleaner
waiting
to help
you.

Regular - Weekly - Cleaner

01359 258991

Typically £13 per hour

www.timeforyousuffolk.co.uk



MID SUFFOLK MOBILITY

Open Tuesday to Saturday

- Scooters, Wheelchairs
- Recliner Chairs • Bath Lifts
- Stair Lifts and much more
- Competitive Prices



Finbow's Yard,
Bacton, Stowmarket

Tel: 01449 781804



DESIGN | PRINT | PROMOTION

Tel: 01449 721599 | www.gippingpress.co.uk | enquiries@gippingpress.co.uk
Units 1&2, Lion Barn Industrial Estate, Needham Market, Ipswich, Suffolk IP6 8NZ

Providing Personal Care in your own Home



Recruiting
NOW!
We need
exceptional
people who
love to
care

Do you need help with:

Personal Care
Dementia Care
Respite Care
Help Around the
House
Day Trips Special
Occasions

Request a
Brochure or book
an appointment
on 01449 763086
or 01284 711845



We only employ people who love to care.



Supporting independent Living

www.mycare-at-home.co.uk

Halls for Hire



Mendlesham Community
Centre

Small and Large Halls
available

Weekends, evenings and
school holidays

Kitchen, bar facilities, Wi Fi
Ample Free Parking

Contact: Sharon Jones

email communitycentre@mendleshampc.org

Tel: 01449 766139

(unless an emergency, please contact Mon -Fri 9am - 5pm)

**R S A PEST MANAGEMENT SERVICES
HAUGHLEY**

Tel No: 01449-672083 Mobile 07745-771516

GAME OVER

For

**Rats, Mice, Moles, Rabbits, Squirrels, Ants, Wasps, Flies,
Birds, Bees, Cockroaches, Bed bugs, Fleas,
Woodworm etc..**

30 year guarantee available on timber treatments, damp proofing

Deer & Fox Management

Fully qualified and insured

For a service you can rely on for effective control of farm, garden and households pests.



Members of the National Pest Technicians Association
Unmarked vehicles and discreet service



**Safe & Sound
Hygiene and Pest Control**

Is your garden over run with Moles ?

Do you have a wasp nest ?

Are your paddocks over-run with rabbits ?

For ALL your Domestic / Commercial Pest Control.

Woodworm treatment available.

No obligation – free survey/quotes.



Pest infestation can damage your health and your home. Recent surveys show that numbers of mice/rats and bed bugs found in UK homes are on the rise. As Local Authorities are cutting back on free pest control services. We are here to offer you a service at the right price.

Please call for a chat on 01379788865• 07809226109• 07518731106

www.safeandsoundhygieneandpestcontrol.co.uk



ORTON-REYNOLDS

lawn & hedge maintenance

MOWING & STRIMMING
HEDGE TRIMMING
PATIO WASHING & GUTTER CLEANING
GROUND CLEARANCE
GARDEN WASTE CLEARANCE

CONTACT US
FOR A QUOTE



T: 07738 230549 E: mail@ortonreynolds.co.uk W: www.ortonreynolds.co.uk



STACKYARD NURSERY

New Garden or Old?

We can supply you with

Trees, Shrubs and Perennials

and provide an onsite

***Garden Consultation Service* £30**

Old Station Road,
Mendlesham, Suffolk
IP14 5RS

Nursery 01449 768078
Mobile 07951 590057

Karon@StackyardNursery.com
www.StackyardNursery.co.uk

Narey's Garden Centre

FOR ALL OF YOUR GARDENING NEEDS

Shrubs - Roses - Perennials - Annuals
Indoor Plants - Compost - Paving - Walling
Fencing - Water Features - Bird Baths
Garden Furniture - Tools - Sundries
AND MUCH MORE

CAFE NOW OPEN

Find us at Spikes Lane, Stowmarket
Tel: 01449 612559



J. LAWES

STATION ROAD, BACTON

HARDWARE · IRONMONGERS
GARDEN AND BUILDERS SUPPLIERS

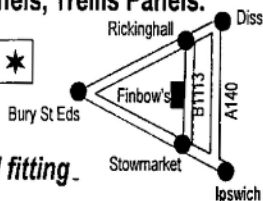
Including Sand, Ballast and Cement in large or small quantities.

FENCING · GATES · GARDEN SHEDS · PEAT / COMPOSTS · LAWNMOWERS
CHAINSAWS · PAINTS · HAND TOOLS · POWER TOOLS · HD & DOMESTIC
ELECTRIC CABLE & FITTINGS · DOUBLE GLAZING · PVC SHEETING

All types of Timber. Timber prepared. Lap Fencing Panels, Trellis Panels.

★ Granular and Nut Salt ★ Timber Patio Decking ★

*Plywood, Chipboard & Hardboard Sheeting,
Drainpipe and Fittings, Full range of Copper Pipe and fitting.*



Open Mon - Sat 8.30am to 5.30pm

Delivery on all items (including Calor Gas)
- Credit Cards accepted

Tel: Stowmarket
01449 781452

MPD TANKS LTD



**Registered
Technician**

Steel and
Plastic oil
tanks
installed
Fully
Insured
Telephone
Mendlesham
01449767820
07708395889

Tank
Change
Ltd

TankChange Ltd.



Suppliers & Installers of Oil Tanks.

Family Business with Over 40 Years Experience
Steel & Plastic Oil Tanks available
Fully Insured OFTEC Registered Engineers.

Telephone: 01449 781210
(Out of Hours 01449 781498) / Mobile: 07899 898720
Email: Terry@TankChange.co.uk

Visit our website @: WWW.TankChange.co.uk

Discounts available to parish magazine readers

nexusheat^{flame}



Nexus Heat offer a complete supply and installation service across a wide selection of traditional and contemporary Woodburners, Multi-fuel, Pellet and Gas stoves. Our beautiful showroom is always filled with a varied display from top manufacturers such as Heta, Parkray, AGA and Bellfires amongst others.

www.nexusheat.co.uk

(01379) 671168

info@nexusheat.co.uk

Maltings Barn, Hinderclay Rd, Wattisfield, Diss, Suffolk, IP22 1NF

PALMERS BAKERY

Est. c1752



Traditional Family Bakers & Confectioners
"Two hundred years of Experience"
Baked Daily in Ancient Brick Ovens
by Craftsmen with local ingredients

HAUGHLEY

WOOLPIT

STOWMARKET

(Station Road opposite the Parish Church)

01449 673286

01359 242700 or 01449 613088

Largest Stockists of Tiptree Jams & Marmalades in East Anglia
Suffolk Honeys & James White Juices
Butterworth's Teas & Biscuits
Free Range Eggs & Local Produce
Freshly Made Sandwiches & Filled Rolls
"One of the Last Traditional Bakers in Suffolk"

www.palmersbakery.co.uk

ALSO AT

STANTON & MEREDITH ROAD - IPSWICH
BRETT'S & NEDHAM MARKET
FRESHFILLS OF CLAYDON

Serenity Yoga
SUFFOLK



YOGA CLASSES IN HAUGHLEY & OLD NEWTON

HAUGHLEY The green room

Wednesday 09.30

Thursday 19.15

OLD NEWTON Village Hall

Friday 16.30

Safe, clean and socially distant yoga classes. Online classes also available.

Contact Bethany for more information.

☎ 07930 199582

✉ serenityyogabethany@outlook.com

www.serenityyogasuffolk.com



**Your Local Independent
Repairs Specialists**

BOSCH HOTPOINT ZANUSSI LIEBHERR
Open: Monday to Friday 9-5pm
Saturday 10-2pm

DK Appliances Ltd

Domestic Appliances

**SUPPLY & INSTALL NEW
AND REFURBISHED APPLIANCES
INCLUDING BUILT-IN**

01449 780398



**Large Showroom,
Finbows Yard, Bacton,
Stowmarket, Suffolk**



www.dkappliances.co.uk

KH

**Kevin Hollings
KITCHEN STUDIO**

Unit 14 Lodge Works,
Stowmarket Road,
Old Newton,
IP14 4EE

01449 257160

info@kevinhollingskitchens.co.uk

www.kevinhollings.com





Specialising in:
HORSE MANÈGES
LANDSCAPING / DESIGN
PROPERTY MAINTENANCE

ALL TYPES OF BUILDING WORK

Contact Details: 07899 953755 / Tony

To Advertise here email Keith on
shelton@live.co.uk

BOLT

Electrical Services

New Build & Extensions • Electrical Repairs
Renovations & Rewires
Consumer Unit Upgrades
Alterations & Additions
Testing & Inspecting • Certification

Chris - 07969 472540
boltelectrical@mail.com



*Fed up of running around after
your car?*

Why not give us the inconvenience –
it's part of our service

WE COLLECT & DELIVER

Servicing

General repairs - shocks, clutches,
brakes etc

Air-conditioning recharged

MOTs arranged

Welding

All work guaranteed

S & P Motocare

Established 1990

Contact: Shane on 01449 771102 or
07802 545737

***Personal Service at
Competitive Rates!***

SPECIALISTS IN OIL BOILERS, SERVICE, REPAIR & REPLACEMENT

- Oil tank replacement
- Hot water cylinders serviced, repaired and replaced
- Heating service repair, replacement and upgrade
- Bathroom/showers installed and all other general plumbing work
- 95% breakdowns repaired within 1 hour on site - Fast response
- All work guaranteed for a minimum of 12 months - parts and labour

D J HOWLETT

VW AUDI MERCEDES BENZ SPECIALIST

(All cars catered for)

A complete service for your car carried out to the very highest standard - up to date diagnostic equipment used

- * Servicing
- * MOT Arranged
- * Repairs
- * Exhausts
- * Batteries
- * Air Conditioning Serviced and Repaired
- * Courtesy Car Available
- * Free Collection/Delivery

Mendlesham Green, Stowmarket. Tel: 01449 766019



STOWMARKET EXHAUST & TYRE CENTRE

Unit 3, Charles Industrial Estate, Stowupland Road,
Stowmarket, Suffolk
Tel: 674141

COMPARE OUR PRICES

HUGE DISCOUNTS

**TRY US FOR PUNCTURES
COMPUTER WHEEL BALANCING
TRACKING**

**ON EXHAUST TYRES AND
BATTERIES
FITTED WHILE YOU WAIT**

Open 8.30 a.m. to 5.30 p.m. Monday to Friday
Saturday 8.30 a.m. to 12.00 noon

REMEMBER

We are your local specialists

Jackie Stevens
Bookkeeping and
Accounting Services

Bookkeeping
Payroll

Accounts preparation
Management accounts
Self-assessment VAT PAYE
Sage QuickBooks
Ideal business start up

Please call Jackie on
01449 781823 or 07988612032
email:
jackiekstevens@live.co.uk

 **REWTS**

T r e e s & G a r d e n s

Tree surgery: from light pruning to large tree take down, surveys and stump removal.

Garden landscaping: patios, fencing, decking, pergolas, gates, stone driveways, water features, turfing and seeding new lawns, borders and planting designs.

Garden maintenance: hedge cutting, pruning, weeding, strimming, grass cutting, tidying.

Tel: 0782 5253 720

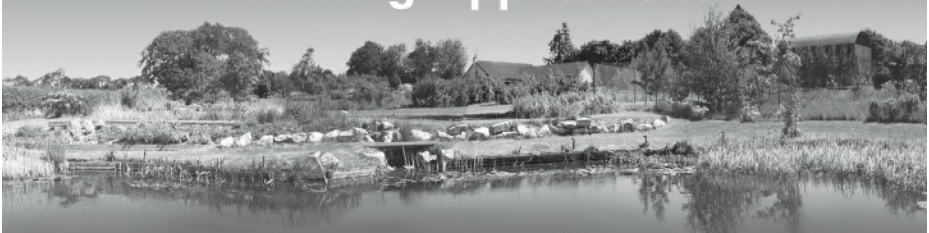
info@rewtstreesandgardens.co.uk

www.rewtstreesandgardens.co.uk

E L D

ELWOOD LANDSCAPE DESIGN
A practice registered with the Landscape Institute

Garden Design • Landscape Design
Planning Applications



01449 768828 team@e-l-d.co.uk
www.e-l-d.co.uk

The Barn Cherry Tree Farm Mendlesham Green Stowmarket Suffolk IP14 5RQ



A/C FENCING AND GARDENING REPAIRS



All fencing and gates supplied and erected.

All gardening work from regular grass mowing to hard landscaping.

Lawn mowing up to 3 acres, Ground care. Strimming - weeding - scarifying.
Garden clearance. Concrete base and shed erecting. Tree felling - stump
grinding. Hedge cutting. Fencing work

Repairs & Servicing to all Lawn Mowers,
Strimmers & Hedgecutters etc.

Call Andy on 01449 403050 or 07748 785197 for a free quote.



Professional Tree Surgeon and team
that can maintain your gardens big or small



Trees & Hedges

Felled, Pruned, Shaped, Dead / Broken & dangerous hanging branches
removed to make them safe.

Hedges cut and maintained to your specification

Gardens

Lawns cut, Borders trimmed, Shrub beds cleaned

Ground Clearance

Large or small areas of scrub cleared and removed

Fences

Panelled. Wired, Post & Rail, Erected or Mended

Free, no obligation, quotations

01449 720157 / 07788590779

james.firman@treesandfences.com / www.treesandfences.com

Is your laptop running slow?

Are you still running Windows 7?

You may be open to hackers!

Windows 7 is now end of life. Microsoft will not be providing support updates and you could be open to attack from hackers.



We can upgrade your computer to Windows 10 and upgrade your computer to a much faster SSD (Solid State Hard Disk).

Starting from £100

Price does not include Windows 10 licence. Windows 7 to 10 upgrade may still be active. Price includes a 250GB SSD Hard disk

Laptop Repairs

PC Repairs

Networking

Virus and Spyware Removal

Upgrades

We come to you!

Call Ben 07885100031

or email

help@suffolkpcsupport.co.uk

SuffolkPCSupport.co.uk

YOUR LOCAL IT SUPPORT SPECIALIST

Suffolk Computers

Our locally based computer engineers offer friendly and technical assistance for all your computing needs



Free Diagnosis

Site visits

Upgrades

NO fix NO fee

Tel: 01449 782195 / 07834 709970

Email: sales@suffolkcomputers.co.uk

Website: www.suffolkcomputers.co.uk

CHIMNEY SWEEP

ECO SWEEP

CHIMNEY SERVICES

- NEW POWER SWEEPING METHOD USED FOR A MORE THOROUGH CHIMNEY CLEAN THAN BRUSHES.
- INDUSTRIAL HEPA FILTERED VACUUM.
- FULLY INSURED.
- INSURANCE RECOGNIZED CERTIFICATES ISSUED.
- SPOTLESS, RELIABLE AND FRIENDLY SERVICE.
- ALL CHIMNEYS, WOOD BURNERS, AGA, BOILER FLUES SWEPT.
- GUILD OF MASTER SWEEPS CERTIFICATED MEMBER.



Power sweeping



Before During After

TEL. 01359 232335

D.I.Alston Ltd.

The Cedars, Brockford.

20ft self storage containers to let.

£100 per month, inc VAT.

**Outdoor caravan storage
And light industrial units
to let.**

**Tonyalston@hotmail.com
07788 974169**

MENDLESHAM CHAPEL

Minister: The Rev'd Robert Sheard
Tel No: 01449 678173



Jeremiah 29: 11

I alone know the plans I have for you, plans to bring you prosperity and not disaster, plans to bring about the future you hope for.

Dear Friends,

Isn't it good news that we know are getting the vaccines for the Covid 19 virus, so that hopefully sooner rather than later we can be getting back to some sort of normal life. We all Hope that we soon will be called so we can have the vaccine (or have you had it?)

It has not been the best of years with not being able to see family and friends, do the things we would usually do, go the places we would usually go to. At this point it may seem that there is little hope that things would get better.

As a Christian I always hang on to the hope that with God, things will get better and they do. We may feel that at times that God is not there, but I know that God does walk along side us feeling that same as we do. I know that God works through doctors and nurses, scientists and chemists. In less than a year they have been able to develop the vaccine that gives us hope for a better future.

Throughout the Bible we see that there is always hope, that what Christ is offering is hope for a better way of life. St Paul writes about it in 1 Corinthians 13. Paul talks about 3 great truths "And now faith, hope, and love abide, these three; and the greatest of these is love." reminding us that when all else fails we still have hope!

So I pray that you will have the hope that things are getting better and we will get through this.

God Bless, Robert

CATHOLIC CHURCH OF OUR LADY, STOWMARKET

Parish Priest - Fr Simon Leworthy

The Presbytery, 29 Lockington Road, Stowmarket IP14 1BQ

Tel:-01449 612946. Email: pp@ourladystowmarket.org.uk

Daily masses have resumed with social distancing and under COVID-19 guidelines

Monday - 10am

Tuesday - 6.30pm

Wednesday - 10am

Thursday - 10am

Friday - 10am

Saturday 6pm (anticipatory mass at St Mary's church Woolpit)

Sunday 8.30am and 10.15am (at Our Lady's in Stowmarket)

Confession on Saturday 10-10.45

Face coverings must be worn at all times while in church

Please see the parish website for further information

<https://ourladystowmarket.org.uk/going-to-mass>

Mendlesham village contacts

Margaret Cutting - 01449 766334 Mo Favager - 01449 766007



**New USAAF 34th Bomb
Group Memorial Mendlesham
Flower Rota**

**Shirley Furze
March**



ST MARY'S MENDLESHAM

www.stmarysmendlesham.org.uk

You are welcome to worship at any
of our services.

SUNDAYS:

**9.30 a.m. Parish Mass &
Address**

First Mass of Sunday:
Saturdays at 3.00 pm

Daily Mass: *see calendar on back
page & check porch notice &
bulletin.*

Daily Morning & Evening Prayer
see porch notice.

**Baptism (Christening), Marriage,
Anointing of the Sick & Holy
Communion from the Reserved
Sacrament - contact Fr Philip**

Sacrament of Reconciliation

Saturdays at 2.00 pm.
In Holy Week: 28th Mar: 6.00 pm;
29th Mar: 6.00pm; 30th Mar: 3.00 pm &
7.45pm; 31st Mar: 8.00 pm
- or contact Fr Philip



Vicar:

**Fr Philip T Gray, B.A.
S.S.C.
Mendlesham Vicarage
01449 766359**

Churchwardens:

**Andrew Fleming
01449 711065**

**Chris Elstone
07530 769676**

WHAT'S ON THIS MONTH

Daily Mass and Morning and Evening prayer continue to be offered publicly and the church remains open for private prayer.

Sunday worship is also **LIVESTREAMED** every week at 9.30 am.

Visit <https://www.facebook.com/stmarysmendlesham/>

2nd Mar	9.30: Requiem Mass – Anne Herron, 1 st anniversary 7.15 for 7.30 pm: Online Lent course via Zoom (approx. 1 hour)
7th Mar	Electoral Roll revision starts & continues throughout March
9th Mar	7.15 for 7.30 pm: Online Lent course via Zoom
10th Mar	9.00 am Requiem Mass – March anniversaries
14th Mar	LENT IV: Mothering Sunday – thanksgiving for 3 mothers: Mother Mary, Mother Church and our own mothers. 9.30 Parish Mass. Candles will be lit for our mothers, living & departed
16th Mar	7.15 for 7.30 pm: Online Lent course via Zoom (approx. 1 hour)
21st Mar	PASSIONTIDE begins
23rd Mar	7.15 for 7.30 pm: Online Lent course via Zoom – final session
25th Mar	ANNUNCIATION OF OUR LORD. Patronal festival of the Shrine of Our Lady of Walsingham. 9.30: Mass & address. Please would all members of the Society of Our Lady of Walsingham try to attend.
27th Mar	CLOCKS GO FORWARD : 1 hour less in bed!
28th Mar	PALM SUNDAY. HOLY WEEK BEGINS 9.30 Parish Mass. I hope we will be able to have a distribution of palms. Electoral Roll Revision concludes today.
29th Mar	FIG MONDAY 7.00 pm: Stations of the Cross
30th Mar	TEMPLE TUESDAY: 7.00 pm: Stations of the Cross
31st Mar	SPY WEDNESDAY: 7.30 pm: Mass

LOOKING AHEAD

The Annual Vestry Meeting for election of churchwardens will be on Sunday 11th April after the 9.30 Parish Mass at approximately 10.20 am approx.

A meeting of the PCC will follow to approve the accounts for 2020. The Annual Parochial Church Meeting (APCM) will be on 9th April at 10.20 approx. after the 9.30 Parish Mass.

Father Philip writes...

During Lent we are studying
St Luke's Gospel, Chapter 15

– the parable of the Prodigal Son. The Pharisees avoided all contacts with sinners, but Jesus shows them a very different kind of God. This parable, together with that of the lost sheep and the lost coin, which feature in the same chapter, all stress God's concern for those who are lost and his joy when each person who is lost is found. I am sure we can all identify with the younger, 'prodigal' son, for every time we lose faith in God we all tend to give way either to anger, revenge, lust or greed etc. We see in that prodigal son a man who went deep into a foreign land and lost everything he took with him. He lost his money, health, honour and self-respect, but the important point was that he was able to return to his father.... "Father, I have sinned...."



One of the greatest challenges to our spiritual life is to receive God's forgiveness, because it requires a total willingness to allow God to do all the healing, restoring and renewing.

The elder brother in the story is lost in resentment, characterised by judgment of his younger brother, coupled with anger and resentment – all damaging to the human heart. In his jealousy and bitterness the elder son can

only see his irresponsible brother is receiving more attention than he is. The big question for us is: "How am I to let myself **be loved by God?**" and not "*how am I going to love God?*" God is looking for me like the shepherd who looks for his sheep and the woman who lights the lamp to look for the lost coin.

The father in the parable represents God. So many Christians sadly stress the fear of God's revenge and punishment, but as long as the Father invokes that kind of fear, he remains an outsider and cannot fully live within us.

There are times we are all like the younger son and we are all like the elder son, but are we like the Father? Jesus said, "**Be compassionate**



as your Father in Heaven is compassionate.” (Luke 6 v 36) We must be like the Father and show compassion to others as He shows it to us. He is a God of compassion who joyfully welcomes sinners into his home. On Good Friday, Jesus shows us exactly how God is full of compassion, able to say of his executioners when they were nailing him to the cross, **“Father, forgive them, they know not what they are doing.”** It is only



through constant forgiveness we become like God our Father - and forgiveness from the heart is unconditional and does not demand anything for itself. The 'Prodigal Son' parable is the portrayal of God whose love, goodness, forgiveness, care, joy and compassion have no limits and we must all open to God's

Spirit to show this in our lives.

God sends his rain on the just and the unjust and is equally kind to the person who grieves his heart. It is a love we must copy if we, too, want to seek nothing except our enemy's highest good.

Giving in Lent for Kagera diocese, Tanzania

Bishop Mike (Bishop of Dunwich) writes:



“We are learning so much from our partner diocese of Kagera about mission and Christian life, about passion for the gospel, generosity of spirit and intense prayerfulness. How can we support Kagera? We know how important key workers are from our own experience in 2020 with Covid-19. Here's a great opportunity to support key workers in our partner diocese.”

Key Information about Kagera, NW Tanzania.

1. Poor & remote; 70% of its million people are subsistence farmers living on less than £1 per day;
2. Malaria and HIV/AIDS are major problems; the simplest malaria medication costs £3 for children and £4 for adults and most struggle to find enough money.
3. Parts of Kagera have some of the highest under-5 mortality rates in the country;
4. Lack of education and low capital investment in the area has led to a perception of being the norm and a culture of dependency;
5. Prices of food and other essentials have soared during Covid -19 so life is harder than ever.



Please find your own box or jar for your donations and bring to church on Maundy Thursday, 1st April, when they will be dedicated at the 7.30 pm Mass of the Last Supper. If you write a cheque, please make it payable to 'St Eds & Ipswich DBF' and write 'Kagera Lent Appeal' on the back.

To read more, go to: <https://www.cofesuffolk.org/exploring-faith/our-bishops/bishops-lent-appeal/>

PARISH CHURCH OF ST MARY'S MENDLESHAM - CHURCH CALENDAR FOR MARCH 2021				
Date	Church Festival	Mass	Intention (we pray especially for....)	Parish Intention
1	St David	9.30	people of Wales	Front Street / Old Orchard
2		9.30	Anne Herron RIP - 1st anniversary	Old Market St/ Braybrooke Close
3		9.30	persecuted Christians	Mill Road and Hobbies Lane
4		9.30	Christian Aid	Chapel Road
5		9.30	prisoners of conscience	Church Road / St Mary's Gardens
6		3.00 pm	forgiveness and reconciliation	Brockford Road
7	LENT III	9.30	Parish and Congregation	Glebe Way
8		9.30	all who suffer from leprosy	Freelands
9		9.30	those we find hard to forgive	Ducksen Road
10		9.00	peace of the world	Horsefair Close
11			the ministry of Deliverance	Mason Court
12		9.30	diocese of Kagera	Mayfield Way
13		3.00 pm	home and family life	Mead Way
14	LENT IV - MOTHERING SUNDAY	9.30	Parish and Congregation	Old Station Rd / Cuttings Close / Schools Close
15		9.30	the sick: healing ministry	Middy Close / The Sidings
16		9.30	all suffering from covid	Wash Lane / Oak Farm Lane
17	ST PATRICK	9.30	people of Ireland	Norwich Road / Bluehouse Lane
18	StCyril of Jerusalem	9.30	all bishops	Mendlesham Green
19	ST JOSEPH	9.30	the dying	Tan Office
20		3.00 pm	Society of the Holy Cross	Outlying houses
21	LENT V - PASSIONTIDE	9.30	Parish and Congregation	Farms in Mendlesham
22		9.30	those falsely accused	Local industries
23		9.30	the departed: March anniversaries	Pub, Community Centre & places of recreation
24		9.30	HM Queen Elizabeth & her Government	Mendlesham School
25	ANNUNCIATION	9.30	Walsingham	SMF: Patrons of Mendlesham
26		9.30	The Guild of All Souls	Village Organisations
27		3.00 pm	our observance of Holy Week	Fr Philip
28	PALM SUNDAY	9.30	Parish and Congregation	Other places of Worship
29	FIG MONDAY	9.30	the homeless	PCC, Parish and Community Councils
30	TEMPLE TUESDAY	9.30	those who betray others	Local Doctors and Nurses
31	SPY WEDNESDAY	7.30 pm	priests renewing their vows	Neighbouring parishes

MASS TIMES MAY CHANGE BECAUSE OF GOVERNMENT REGULATIONS: PLEASE CHECK CHURCH WEBSITE AND WEEKLY BULLETIN



The Hair Studio at Mendlesham Ltd

BEV & KIRSTY

WE ARE BOTH FULLY QUALIFIED WITH OVER 40 YEARS EXPERIENCE BETWEEN US
PROFESSIONAL ADVICE AND PERSONAL ATTENTION IN ALL ASPECTS OF HAIRDRESSING

EASY OFF-ROAD PARKING

FOR ALL ADVICE AND APPOINTMENTS CALL US ON 01449 766977

OR VISIT US AT: Ropers Farm, Church Road, Mendlesham, IP14 5SF

www.hairstudioatmendlesham.co.uk



Lamberts Service Station Ltd

www.lambertsservicestationltd.com Email : lamberts.1@btconnect.com

Shop Green, Bacton, Stowmarket, IP14 4LG, Tel: 01449 781260

Mobile: 07834 778116

Car Service, MOT Testing and Repairs

Please visit our website for
full list of services.

WORKSHOP

Service all Makes and Models
Air Conditioning
Engine Diagnostics
Fault Finding
Engine Management Lights
Exhausts
ABS

ITEMS STOCKED

Tyres
Batteries
Wiper Blades
Bulbs
Calor Gas

MOT TESTING

MOTS while you wait - By Appointment
Petrol
Diesel
Electric
Hybrids

RECOVERY SERVICE

Home Starts
Breakdown
Accident Recovery

BODYSHOP

Accident Work
Body Work Repairs
Paint Work
Re-Sprays
Welding

FORECOURT SERVICES

Petrol and Diesel
Tyre Pressure and Levels
Checked
Bulbs Fitted While You Wait
Antifreeze Check

**Competitive prices on Tyres - Quotes given
Free no obligation Estimates on work needed**

Find us on Facebook - www.facebook.com/lambertsservicestation